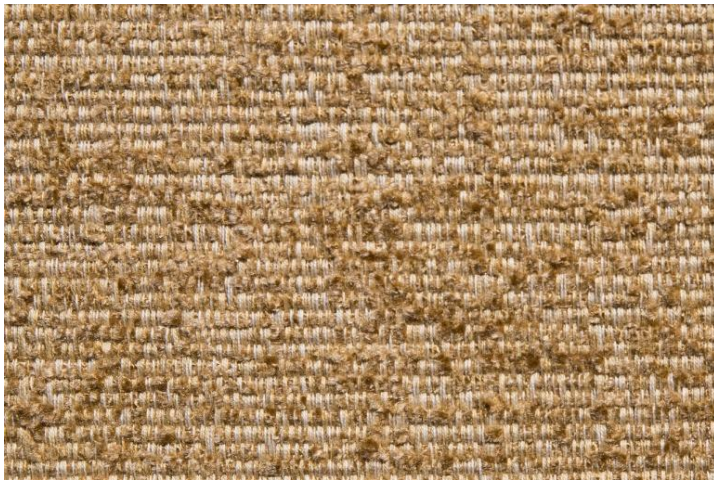


# calvinfabrics®



**11053**

**REPOSE**

**MELLOW YELLOW**

Calming, earthy colors of soft cotton chenille crossed with tonal complements in the warp create a textural cloth offering visual interest and structural integrity. The overall effect of this American-made textile is similar to the look of bark cloth with a much more inviting hand.

<b>WIDTH:</b>	56"
<b>CONTENT:</b>	48% COTTON 48% RAYON 4% POLYESTER
<b>FINISH:</b>	LATEX-BACKED
<b>COUNTRY:</b>	USA
<b>CLEANING CODE:</b>	S
<b>ABRASION:</b>	WYZENBEEK: 30,000
<b>ABRASION RATING:</b>	HEAVY DUTY CONTRACT
<b>FIRE RATING:</b>	NFPA 260/UFAC
<b>USAGE:</b>	UPHOLSTERY
<b>COLOR FAMILY:</b>	YELLOW TO GOLD

