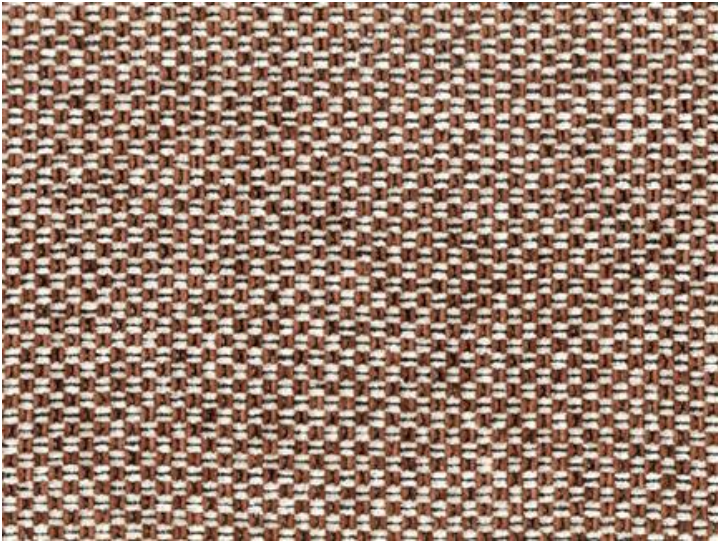


# calvinfabrics®



**11353**

**PICCADILLY SQUARE**

**BRICK FACADE**

A multi-tonal basket weave, Piccadilly Square employs fluffy chenille yarns in warp and weft to create a supremely textural and sublimely soft cloth for residential upholstery use. Low contrast between the chief yarn colors in the more muted colorways perfectly executes the basket weave pattern while an intensified level of contrast between predominant yarn colors in the more vibrant colorways evokes a diminutive checkerboard pattern. Cream chenille yarns form the backdrop for all twelve colorways, with red-brown and espresso defining Brick Facade.

**WIDTH:** 54"  
**CONTENT:** 70% RAYON 30% COTTON  
**FINISH:** ACRYLIC-BACKED  
**COUNTRY:** USA  
**CLEANING CODE:** S  
**ABRASION:** WYZENBEEK: 20,000  
**ABRASION RATING:** GENERAL CONTRACT  
**USAGE:** UPHOLSTERY  
**COLOR FAMILY:** ORANGE TO RED

