

NOVEMBER 2013

Interiors & sources®

Excellence
in Commercial
Design



***MOVERS
+ SHAKERS***



SOURCES: TEXTILES



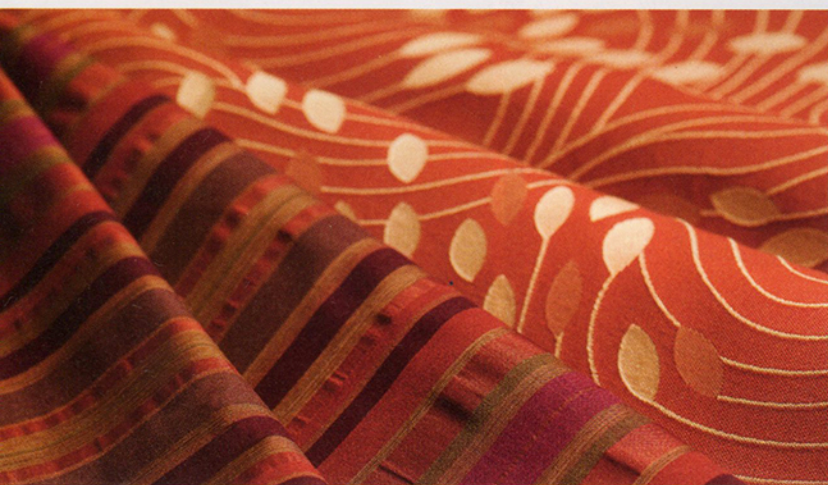
Part of the Performance portfolio from Willowbrook are ideal for applications education. Performance finishes like NanoShield® textiles to withstand the 24/7 use and constant cleaning found in high-traffic environments. Both patterns are available in eight colorways.

1510-11513
Horizon

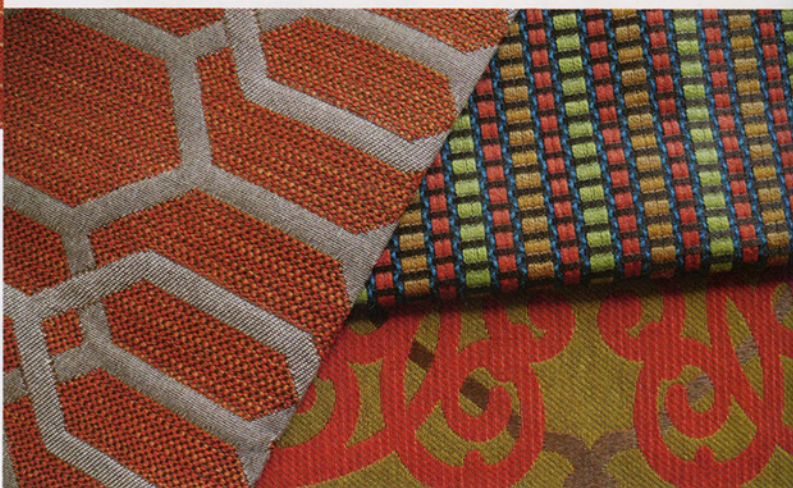
Inspired by the notion of not being set or guided in a particular direction, the four patterns of the Drift Collection from **Pallas Textiles** wander impulsively. Field Play, Fracture and Off Track include a Greenshield® finish for permanent stain and spill resistance, while Patina is a recyclable Sunbrella® Contract Fabric.



Horizon from **Calvin Fabrics** features undulating lines reminiscent of distant mountains reflected on the water, resulting in a semi-regular horizontal stripe for upholstery use. Nuances in the nap create instances of light and shadow, matte and sheen and high-low relief between plush chenille elements and its low-lying neutral background. Available in four colorways.



Pollack's new collection of high-performing, bleach-cleanable fabrics has been designed to bring vibrant color to the most demanding environments. The line's six unique patterns have each earned a Wyzenbeek rating of 100,000 rubs and require only a simple cleaning solution when soiled.



Robert Allen Contract has added a second collection to its Classic Living series, with a bright new range of fabrics designed for senior living and healthcare environments. Featuring 63 performance upholsteries and three printed draperies, Classic Living II fuses multi-hued designs and textures with color palettes taken from Mediterranean, Tuscan, Spa, Classic and Bouquet styles. Each fabric comes with a Nano-Tex™, Durablock® or Crypton barrier.